



# PERFORMANCE REPORT – CASELOADS

The Indeterminate Sentence Review Board (ISRB), like all agencies of Washington State government, is using data and information to guide performance management. There are four types of performance measurements being reported on by the ISRB:

- Caseload measures
- Workload measures
- Efficiency measures
- Effectiveness or Outcome measures

**Number of inmates and number of offenders being supervised in the community are both caseload measures.** The ISRB does not have direct financial responsibility for inmates or offenders being supervised in the community. But, the more offenders the ISRB has decision making responsibility for, the more work that is generated. This does have a financial impact.

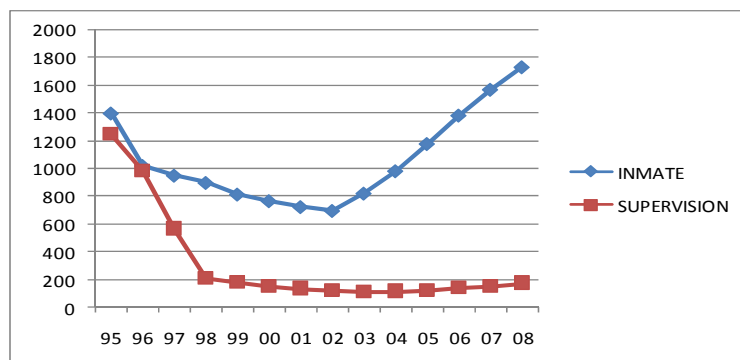
## ISRB Caseload Changes

**Beginning in late 2001, the ISRB became responsible for 2 separate types of offenders: PRE and CCB.**

**The number of PRE offenders is slowly decreasing.**

**The number of CCB offenders is much more rapidly increasing.**

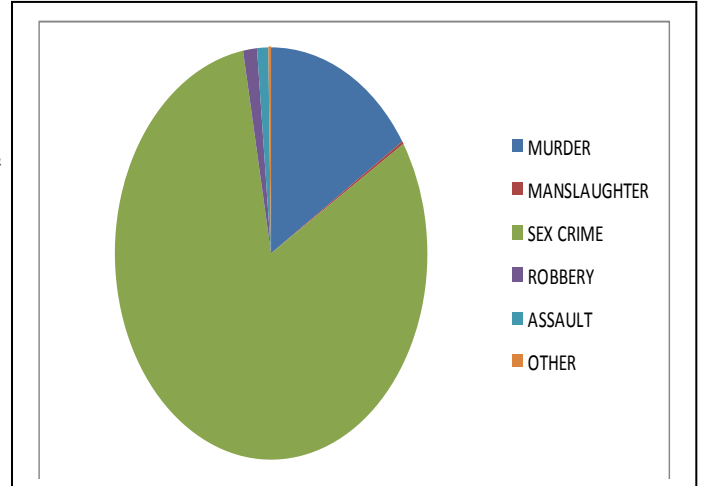
The ISRB makes decisions for two groups of offenders. The first is made up of offenders with offense dates are before July 1, 1984 (PRE). The second is made up of certain serious sex offenders with offense dates on or after August 1, 2001 (CCB).



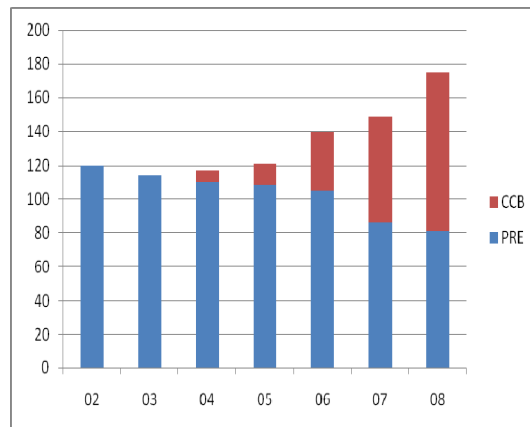
As seen in the preceding chart, the number of ISRB inmates declined steadily during the late 1990's. It started growing dramatically after the new sex offender population started making its mark. Since the end of Fiscal Year 2002, the number of ISRB inmates has

increased 150 percent. In contrast, the number of ISRB offenders on supervision in the community (parolees) declined dramatically during the late 1990's. The new sex offender population has not yet, however, begun to noticeably increase the community supervision (parole plus community custody) totals.

All of the new cases coming under ISRB jurisdiction are sex offenders. There are also sex offenders among the offenders with pre-July 1, 1984 sentences. Almost all of the older case-type (PRE) offenders are serving time for very serious crimes. The percentages of each crime type, for the ISRB inmates in prison on June 30, 2008, are shown in the accompanying chart. Sex offenders are 81 percent and Murder offenders are another 16 percent of the total.



A clearer picture of the ISRB offenders being supervised is seen in the following graph. This shows the make-up of the ISRB community population, beginning at the end of Fiscal Year 2002. The total number on supervision in the community has only increased 46 percent. New sex offenders (CCB) are now over half of the total.



While the numbers of ISRB offenders are important measures, they are **not** the most direct indicator of the work done by the ISRB. The relationships between offender characteristics and behavior, and the decision-making processes carried out by the ISRB, will be further investigated when we report on other performance measures such as release hearings and community supervision violation hearings.

Indeterminate Sentence Review Board  
 PO Box 40907  
 Olympia, WA 98504-0907  
 isrb@doc1.wa.gov